



ZF3HP-12, ZF3HP-20

Ref: BMW1	10", 12 Splines			
BMW1	1960-75			
	Type: Non Lock Up	Hub: Ears		
	Diameter: 10"	Input Splines: 12		
	Bolt Circle: 8.5"	Cooling Shroud		
	Mounting: 4 Pads	Pilot Dia: .787"		
Ref: BM-5	12", 14 Splines			
BMW5	1960-75			
	Type: Non Lock Up	Hub: Ears		
	Diameter: 12"	Input Splines: 14		
	Bolt Circle: 9.625"	Cooling Shroud		
	Mounting: 4 Pads	Pilot Dia: .787"		
Ref: BM-10	12", 29 Splines			
BMW10	1960-75			
	Type: Non Lock Up	Hub: Ears		
	Diameter: 12"	Input Splines: 29		
	Bolt Circle: 9"	Cooling Shroud		
	Mounting: 4 Pads	Pilot Dia: .787"		

ZF3HP-22






Ref: BM-3	10", .824" Pilot			
BMW3	1976-83 BMW 320i Codes: C1, G, P			
	Type: Non Lock Up	Hub: Slotted		
	Diameter: 10"	Input Splines: 27		
	Bolt Circle: 8.5"	Cooling Shroud		
	Mounting: 4 Pads	Pilot Dia: .824"		
Ref: BM-6	10", .824" Pilot			
BMW6	1976-83 BMW 528e, 533i, 633csi Codes: A, A1, S			
	Type: Non Lock Up	Hub: Slotted		
	Diameter: 10"	Input Splines: 27		
	Bolt Circle: 9.125"	Cooling Shroud		
	Mounting: 4 Pads	Pilot Dia: .824"		

ZF3HP-22 (cont.)

Ref: BMW7E	10", 1.257" Pilot			
BMW7E	1982-84 BMW			
	Codes: E			
	Type: Non Lock Up	Hub: Slotted		
	Diameter: 10"	Input Splines: 27		
	Bolt Circle: 8.5"	Cooling Shroud		
	Mounting: 4 Pads	Pilot Dia: 1.257"		
Ref: SU-3	10.25", .824" Pilot, Ring Gear			
BMW33	1976-84 Peugeot			
	Codes: B, T, N, NB			
	Type: Non Lock Up	Hub: Slotted		
	Diameter: 10.25"	Input Splines: 27		
	Bolt Circle: 8.5"	Cooling Fins		
	Mounting: 4 Pads	Pilot Dia: .824"		
Ref: BMW27	10.25", .824" Pilot, Ring Gear			
BMW27	1976-84 Peugeot			
	Codes: K7			
	Type: Non Lock Up	Hub: Slotted		
	Diameter: 10.25"	Input Splines: 27		
	Bolt Circle: 8.5"	Cooling Shroud		
	Mounting: 4 Pads	Pilot Dia: .824"		
Ref: PT-1	10.25", .824" Pilot, No Ring Gear			
BMW26	1976-84 Peugeot			
	Type: Non Lock Up	Hub: Slotted		
	Diameter: 10.25"	Input Splines: 27		
	Bolt Circle: 8.5"	Cooling Fins		
	Mounting: 4 Pads	Pilot Dia: .824"		
Ref: BM-9	10.25", .824" Pilot, No Ring Gear			
BMW9	1976-84 Peugeot			
	Codes: VERTO			
	Type: Non Lock Up	Hub: Slotted		
	Diameter: 10.25"	Input Splines: 27		
	Bolt Circle: 8.5"	Cooling Shroud		
	Mounting: 4 Pads	Pilot Dia: .824"		
Ref: BM-8	10.5", .630" Pilot			
BMW8	1976-84 Alfa Romeo			
	Codes: E			
	Type: Non Lock Up	Hub: Slotted		
	Diameter: 10.5"	Input Splines: 27		
	Bolt Circle: 8.5"	Mounting Ring		
	Mtg: 6 Tapped Holes	Pilot Dia: .630"		

ZF3HP-22

ZF3HP-22 (cont.)


Ref: BM-7S	10.25", 1.257" Pilot			
BMW7S	1982-84 BMW 318i, 320i			
	Codes: P			
	Type: Non Lock Up	Hub: Slotted		
	Diameter: 10.25"	Input Splines: 27		
	Bolt Circle: 8.5"	Cooling Shroud		
	Mounting: 4 Pads	Pilot Dia: 1.257"		
Ref: BM-7	11", 1.257" Pilot			
BMW7	1979-83 BMW 528			
	Codes: IN, NI			
	Type: Non Lock Up	Hub: Slotted		
	Diameter: 11"	Input Splines: 27		
	Bolt Circle: 9.125"	Cooling Shroud		
	Mounting: 4 Pads	Pilot Dia: 1.257"		
Ref: BMW7L	11", 1.257" Pilot			
BMW7L	1981-82 BMW 633csi, 733i			
	Codes: X, IV			
	Type: Non Lock Up	Hub: Slotted		
	Diameter: 11"	Input Splines: 27		
	Bolt Circle: 9.125"	Cooling Shroud		
	Mounting: 4 Pads	Pilot Dia: 1.257"		
Ref: BM-4	12", .824" Pilot			
BMW4	1976-83 BMW 530			
	Codes: I, J, L			
	Type: Non Lock Up	Hub: Slotted		
	Diameter: 12"	Input Splines: 27		
	Bolt Circle: 9.125"	Cooling Shroud		
	Mounting: 4 Pads	Pilot Dia: .824"		
Ref: BM-15	12", 1.257" Pilot			
BMW4B	1976-84 BMW			
	Codes: Z			
	Type: Non Lock Up	Hub: Slotted		
	Diameter: 12"	Input Splines: 27		
	Bolt Circle: 9.125"	Cooling Shroud		
	Mounting: 4 Pads	Pilot Dia: 1.257"		

ZF4HP-14, ZF4HP-18

Ref: BM-16	10", .475" Pilot		
BMW16	1989-Up Peugeot, Saab Codes: K8		
	Type: Non Lock Up	Hub: Slotted	
	Diameter: 10"	Input Splines: 29	
	Bolt Circle: 9.25"	No Mounting Ring	
	Mounting: 3 Pads	Pilot Dia: .475"	
Ref: SA-5	11", .629" Pilot		
SA7	1987-97 Saab 9000, Alpha Romeo Codes: M6		
	Type: Non Lock Up	Hub: Slotted	
	Diameter: 11"	Input Splines: 34	
	Bolt Circle: 9.25"	No Mounting Ring	
	Mounting: 3 Pads	Pilot Dia: .629"	
Ref: SA-6	11", .824" Pilot		
SA8	1987-97 Saab Codes: Q15		
	Type: Non Lock Up	Hub: Slotted	
	Diameter: 11"	Input Splines: 34	
	Bolt Circle: 9.25"	No Mounting Ring	
	Mounting: 3 Pads	Pilot Dia: .824"	
Ref: SA-4	11", 1.100" Pilot		
SA4	1987-97 9000S Turbo Codes: C6, D6		
	Type: Non Lock Up	Hub: Slotted	
	Diameter: 11"	Input Splines: 34	
	Bolt Circle: 9.25"	No Mounting Ring	
	Mounting: 3 Pads	Pilot Dia: 1.100"	
Ref: BM-65	11", .630" Pilot		
AU3	1988-Up Audi Codes: F11		
	Type: Non Lock Up	Hub: Slotted	
	Diameter: 11"	Input Splines: 34	
	Bolt Circle: 9.25"	No Mounting Ring	
	Mounting: 3 Pads	Pilot Dia: .630"	
Ref: R-34	11", 1.575" Pilot		
J18	1988-Up Premier, Monaco Codes: G7		
	Type: Non Lock Up	Hub: Slotted	
	Diameter: 11"	Input Splines: 34	
	Bolt Circle: 9.625"	No Mounting Ring	
	Mounting: 3 Pads	Pilot Dia: 1.575"	

ZF4HP-14, 4HP-18

ZF4HP-22, ZF4HP-24 (3 Tapped Holes)

Ref: VO-13	11", .945" Pilot, 10" Bolt Circle			
VO13	1984-Up Volvo 760D, 760GLE Codes: C2, N3			
	Type: Lock Up	Hub: Slotted		
	Diameter: 11"	Input Splines: 27		
	Bolt Circle: 10"	Mounting Ring		
	Mtg: 3 Tapped Holes	Pilot Dia: .945" to 1.040"		






Ref: BM-11	11", 1.257" Pilot			
BMW11	84-Up BMW 325e, 528e, 628csi, 735i Codes: L1, N2, R1, R2, R3, S1, U1, W2			
	Type: Lock Up	Hub: Slotted		
	Diameter: 11"	Input Splines: 27		
	Bolt Circle: 9"	Can Use BMW17		
Mtg: 3 Tapped Holes	Pilot Dia: 1.257"			

ZF4HP-22, ZF4HP-24 (3 Pads)

Ref: BM-12	10", 1.257" Pilot			
BMW12	1984-Up BMW 318i, 325i Codes: U2, U4, V2			
	Type: Lock Up	Hub: Slotted		
	Diameter: 10"	Input Splines: 27		
	Bolt Circle: 9"	No Mounting Ring		
Mounting: 3 Pads	Pilot Dia: 1.257"			

Ref: VO-14	11", .945" Pilot			
VO15	84-Up 760GLE Turbo Diesel, 740GLE Codes: C2, N3			
	Type: Lock Up	Hub: Slotted		
	Diameter: 11"	Input Splines: 27		
	Bolt Circle: 9.75"	No Mounting Ring		
Mounting: 3 Pads	Pilot Dia: .945"			


ZF4HP-22, ZF4HP-24 (3 Pads) (cont.)

Ref: BM-17	11" (Code T8 must use BMW17)		
BMW17	1987-Up BMW 325i, 535si, 850		
	Codes: C7, R2, R7, T8, W2 (Some Codes can use BMW11)		
	Type: Lock Up	Hub: Slotted	
	Diameter: 11"	Input Splines: 27	
	Bolt Circle: 9"	Can Use BMW11 Exc T8 Code	
	Mounting: 3 Pads	Pilot Dia: 1.257"	
Ref: VO26	11.75", .945" Pilot		
VO26	1984-Up Audi, Volvo		
	Codes: J8		
	Type: Lock Up	Hub: Slotted	
	Diameter: 11.75"	Input Splines: 27	
	Bolt Circle: 9.75"	2 Holes Per Pad	
	Mounting: 3 Pads	Pilot Dia: .945"	
Ref: BM-21	11.75", 1.257" Pilot		
BMW21	1984-86 BMW 745i		
	Codes: A9, P1		
	Type: Lock Up	Hub: Slotted	
	Diameter: 11.75"	Input Splines: 27	
	Bolt Circle: 9"	1 Hole Per Pad	
	Mounting: 3 Pads	Pilot Dia: 1.257"	
Ref: BM-18	11.75", 1.257" Pilot		
JA3	1984-88 Jaguar XJ6, BMW 535i		
	Codes: AG, H3, T7, Z1, Z6		
	Type: Lock Up	Hub: Slotted	
	Diameter: 11.75"	Input Splines: 27	
	Bolt Circle: 9.25"	Replaces BMW18	
	Mounting: 3 Pads	Pilot Dia: 1.257"	
Ref: BM-25	12.75", 1.257" Pilot		
BMW25	89-90 735i, 750, 850i, 1990 Lincoln V8		
	Codes: E11, O7		
	Type: Lock Up	Hub: Slotted	
	Diameter: 12.75"	Input Splines: 27	
	Bolt Circle: 10.5"	Two Body Seam Welds	
	Mounting: 3 Pads	Pilot Dia: 1.257"	


ZF4HP-22, 4HP-24


ZF4HP-22, ZF4HP-24 (4 Tapped Holes)


Ref: BM-14	10.75" (Can Use BMW22)		
VO10	1984-Up Volvo 740GLE Codes: C3, U3, UE		
	Type: Lock Up	Hub: Slotted	
	Diameter: 10.75"	Input Splines: 27	
	Bolt Circle: 8.5"	Can Use BMW22	
	Mtg: 4 Tapped Holes	Pilot Dia: .750"	

Ref: BM-66	12" (See Also BMW24)		
BMW37	1996-Up Range Rover 4wd 4.0L Codes: D19, L19		
	Type: Lock Up	Hub: Slotted	
	Diameter: 12"	Input Splines: 27	
	Bolt Circle: 9"	Mounting Ring	
	Mtg: 4 Tapped Holes	Pilot Dia: 1.335"	

ZF4HP-22, ZF4HP-24 (4 Pads / 4 Studs)


Ref: BM-13	11", 4 Studs (Can Use BMW34)		
BMW13	84-Up Continental 2.4L Diesel Codes: A3		
	Type: Lock Up	Hub: Slotted	
	Diameter: 11"	Input Splines: 27	
	Bolt Circle: 8.5"	Mounting Plate	
	Mounting: 4 Studs	Pilot Dia: 1.257"	

Ref: BM-22	11", .750" Pilot (Can Use VO10)		
BMW22	1986-Up Volvo, 760GI Turbo Diesel Codes: C3, U3, UE		
	Type: Lock Up	Hub: Slotted	
	Diameter: 11"	Input Splines: 27	
	Bolt Circle: 8.5"	Can Use VO10	
	Mounting: 4 Pads	Pilot Dia: .750"	

Ref: BM-20	11", .825" Pilot		
BMW20	1984-Up Peugeot 505 Codes: P4		
	Type: Lock Up	Hub: Slotted	
	Diameter: 11"	Input Splines: 27	
	Bolt Circle: 8.5"	135 T Ring Gear	
	Mounting: 4 Pads	Pilot Dia: .825" to 1.040"	

Ref: BM-19	11", 1.100" Pilot		
BMW19	1986-Up Peugeot 504 Diesel, 505 Codes: H5, M4		
	Type: Lock Up	Hub: Slotted	
	Diameter: 11"	Input Splines: 27	
	Bolt Circle: 8.5"	No Mounting Plates	
	Mounting: 4 Pads	Pilot Dia: 1.100"	

ZF4HP-22, ZF4HP-24 (4 Pads / 4 Studs) (cont.)

Ref: BMW34	11", 1.257" Pilot (Can Use BMW13)		
BMW34	1984-Up BMW 325E 2.5L, 533		
	Codes: A3		
	Type: Lock Up	Hub: Slotted	
	Diameter: 11"	Input Splines: 27	
	Bolt Circle: 8.5"	No Mounting Plate	
Mounting: 4 Pads	Pilot Dia: 1.257"		

Ref: BMW23	11", 1.565" Pilot		
BMW23	1984-Up Peugeot 504, 505, 505STI		
	Codes: R4		
	Type: Lock Up	Hub: Slotted	
	Diameter: 11"	Input Splines: 27	
	Bolt Circle: 10.25"	No Mounting Plate	
Mounting: 4 Pads	Pilot Dia: 1.565"		

Ref: BM-24	12", 1.060" Pilot (See Also BMW37)		
BMW24	1987-Up Jaguar, Range Rover		
	Codes: K2		
	Type: Lock Up	Hub: Slotted	
	Diameter: 12"	Input Splines: 27	
	Bolt Circle: 9"	No Mounting Plate	
Mounting: 4 Pads	Pilot Dia: 1.060" to 1.379"		

ZF4HP-22, ZF4HP-24 (6 Pads)

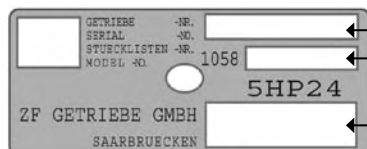
Ref: BM-27	12.625"		
JA5	1989-Up Jaguar XJ6 4.0L		
	Codes: K7		
	Type: Lock Up	Hub: Slotted	
	Diameter: 12.625"	Input Splines: 27	
	Bolt Circle: 9.2"	No Mounting Plate	
Mounting: 6 Pads	Pilot Dia: 1.257"		

ZF4HP-22, 4HP-24

ZF5HP18

Ref: BM-32	10.875"			
VO27	1995-Up Porsche 911			
	Codes: K10			
	Type: Lock Up	Hub: Slotted		
	Diameter: 10.875"	Input Splines: 27		
	Bolt Circle: 11.75"	132 T Ring Gear		
Mounting: 8 Holes	Pilot Dia: 1.257"			
ZF518-A	1992-95 BMW 320i		Picture Not Available	
	Codes: Y12			
	Used With 1056-000-081 Transmissions			
Ref: BM-31	11", 1.257" Pilot			
BMW36	1992-7/93 BMW 530i			
	Codes: A11 (1056-000-087 Trans)			
	Type: Lock Up	Hub: Slotted		
	Diameter: 11"	Input Splines: 27		
	Bolt Circle: 10.375"	Used w/ 1056-000-087		
Mounting: 3 Pads	Pilot Dia: 1.257"			
Ref: BMW35	7/93-95 BMW 530i			
BMW35	Codes: E18 (1056-000-088 Trans)			
	Type: Lock Up	Hub: Slotted		
	Diameter: 11"	Input Splines: 27		
	Bolt Circle: 10.375"	Used w/ 1056-000-088		
	Mounting: 4 Pads	Pilot Dia: 1.257"		
ZF518-D	1993-96 M3		Picture Not Available	
	Codes: O21			
	Used With 1056-000-097 Transmissions			
ZF518-E	1997-99 M3 3.2		Picture Not Available	
	Codes: B26			
	Used With 1056-000-099 Transmissions			

Units on this page with part numbers that begin with "ZF5" are factory units remanufactured in Germany by ZF Industries.
The Recon Warranty does not apply to these factory units.



← Transmission Serial #

← Used With Transmission #

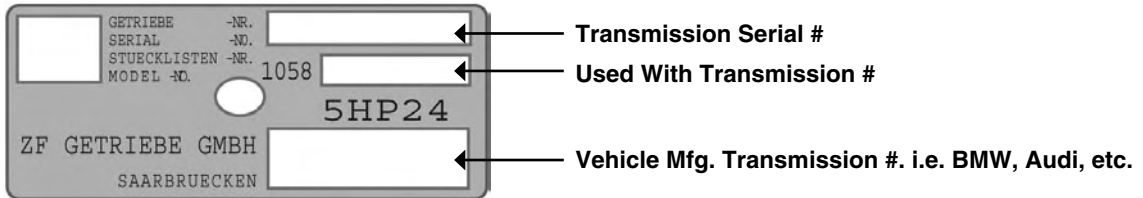
← Vehicle Mfg. Transmission #. i.e. BMW, Audi, etc.

ZF5HP-19

ZF519-A	2000-Up BMW 320i Codes: T51	Picture Not Available
	Used With 1060-000-008 Transmissions	
ZF519-B	03/2000-Up BMW 323i, 323Ci Codes: S38	Picture Not Available
	Used With 1060-000-005 Transmissions	
ZF519-C	2000-Up BMW 325i, 325Ci 03/2001-Up 525i Codes: C51	Picture Not Available
	Used With 1060-000-009 Transmissions	
ZF519-D	1999-Up 330i, 330Ci 03/2001-02 530i Codes: B61	Picture Not Available
	Used With 1060-000-010 Transmissions	

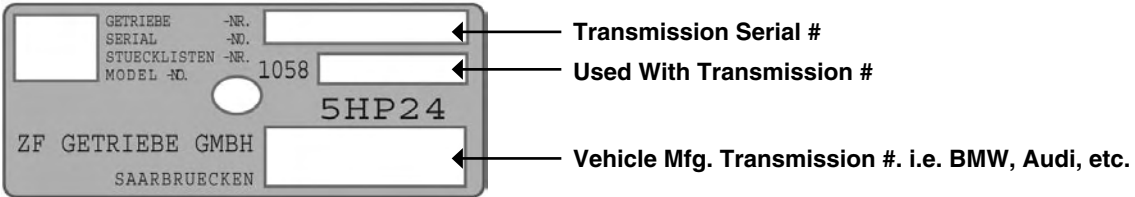
ZF5HP-19

Units on this page with part numbers that begin with "ZF5" are factory units remanufactured in Germany by ZF Industries.
The Recon Warranty does not apply to these factory units.



ZF5HP-19FL		
ZF519FL-B	7/95-7/97 Audi A4 Avant, Sedan 2.8L Codes: T45	Picture Not Available
	Used With 1060-030-005 Transmissions	
ZF519FL-C	8/97-12/98 Audi A8 Sedan 3.7L Codes: J28	Picture Not Available
	Used With 1060-030-006 Transmissions	
ZF519FL-D	10/96-2/97 Audi A4 Avant, Sedan 2.8L 5/00-10/01 Audi A4 Avant, Sedan 2.8L 8/99-4/01 Audi A6 Avant, Sedan 2.8L 3/01-4/02 VW Passat 2.8L Codes: N28	Picture Not Available
	Used With 1060-030-011, 1060-030-059, 1060-030-088 Transmissions	
ZF519FL-E	3/97-7/99 Audi A4 Avant, Sedan 2.8L 8/97-7/99 Audi A6 Avant, Sedan 2.8L 10/97-8/00 VW Passat 2.8L Codes: F31	Picture Not Available
	Used With 1060-030-021, 1060-030-027 Transmissions	
ZF519FL-F	7/96-10/01 Audi A4 Avant, Sedan 1.8L 7/97-8/00 VW Passat 1.8L Codes: A33	Picture Not Available
	Used With 1060-030-013, 1060-030-049, 1060-030-072 Transmissions	

Units on this page with part numbers that begin with "ZF5" are factory units remanufactured in Germany by ZF Industries.
The Recon Warranty does not apply to these factory units.







ZF5HP-19FLA

		Picture Not Available
ZF519FL-D	8/99-8/01 Audi A4, A6 Quattro 2.8L 8/99-4/02 VW Passat 2.8L (4 Motion) Codes: N28 Used With 1060-040-035, 1060-040-065 Transmissions	
		Picture Not Available
ZF519FL-E	8/97-7/99 Audi A4, A6 Quattro 2.8L 6/98-4/99 VW Passat 2.8L (4 Motion) Codes: F31 Used With 1060-040-012, 1060-040-013, 1060-040-036 Transmissions	
		Picture Not Available
ZF519FL-F	8/97-2003 Audi A4 Quattro 1.8L Codes: A33 1060-040-018, 1060-040-030, 1060-040-054, 1060-040-073, 1060-040-101 Transmissions	
		Picture Not Available
ZF519FLA-E	9/01-2003 Audi A4, A6 Quattro 3.0L 5/99-5/01 Audi A6, S4 Quattro 2.7L 5/00-6/02 Audi Allroad Quattro 2.7L Codes: F35 1060-040-044, 1060-040-053, 1060-040-063, 1060-040-075, 1060-040-087, 1060-040-103	
		Picture Not Available
ZF519FL-B	10/95-4/97 Audi A4 Quattro 2.8L Codes: T45 Used With 1060-040-002 Transmissions	
		Picture Not Available
ZF519FLA-G	12/01-4/02 VW Passat 4.0L (4 Motion) Codes: Q56 Used With 1060-040-100 Transmissions	
		Picture Not Available
ZF519FLA-H	9/02-2003 Audi Allroad Quattro Codes: P56 Used With 1060-040-093 Transmissions	

ZF5HP-19FLA

Units on this page with part numbers that begin with "ZF5" are factory units remanufactured in Germany by ZF Industries.
The Recon Warranty does not apply to these factory units.

ZF5HP-24

			
ZF524-A	1/97-9/98 BMW 540i, 740i 1996-97 BMW 840Ci Codes: L31		
	Used With 1058-000-005, 1058-000-016 Transmissions		
		Picture Not Available	
ZF524-B	1997-98 Jaguar XJ8 3.2L 1998 Jaguar XJ8 4.0L, XK8 4.0L Codes: P32		
	Used With 1058-000-014, 1058-000-024 Transmissions		
			
ZF524-C	1997-98 Jaguar XK8 4.0L 1998 Jaguar XJ8 4.0L Codes: Q32		
	Used With 1058-000-009, 1058-000-013, 1058-000-015 Transmissions		
		Picture Not Available	
ZF524-D	1999 Jaguar XJ8 4.0L, XK8 4.0L 1998-02 Jaguar XJ8 3.2L Codes: J35		
	Used With 1058-000-027, 1058-000-028 Transmissions		
			
ZF524-E	1999 Jaguar XJ8 4.0L, XK8 4.0L Codes: K35		
	Used With 1058-000-026 Transmissions		
			
ZF524-F	9/98-Up BMW 540i, 740i, 740iL Codes: N35		
	Used With 1058-000-021 Transmissions		

ZF5HP-24

Units on this page with part numbers that begin with "ZF5" are factory units remanufactured in Germany by ZF Industries.



The Recon Warranty does not apply to these factory units.

ZF5HP-24 (cont.)

ZF524-G	9/98-Up BMW 540i, 740i, 740iL Codes: L35	
	Used With 1058-000-022 Transmissions	
ZF524-H	1998-Up BMW X5 4.4i 2003-Up Range Rover 4.4L V8 Codes: F38	
	Used With 1058-000-029, 1058-000-032 Transmissions	
ZF524-J	2001-Up BMW X5 4.6is Codes: L51	<p align="center">Picture Not Available</p>
	Used With 1058-000-034 Transmissions	

ZF5HP-24, 5HP-24A

ZF5HP-24A


ZF524A-B	4/99-5/01 Audi A6 Quattro 4.2L 9/96-9/02 Audi A8 Quattro 4.2L Codes: P35	
	Used With All 1058-020-xxx Transmissions Incl. 004, 007, 009, 014, 015, 021, 031, 033 Except -029 & -030 (See Below)	
ZF524A-C	6/01-03 Audi S6 Quattro 4.2L 5/00-6/01 Audi A8 Quattro 4.2L Codes: Q35	
	Used With 1058-020-029, 1058-020-030 Transmissions	

Units on this page with part numbers that begin with "ZF5" are factory units remanufactured in Germany by ZF Industries.
 The Recon Warranty does not apply to these factory units.

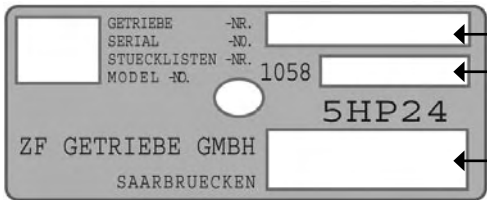
ZF5HP-30

ZF530-A	1999-Up Aston Martin DB7 Vantage V12 1999-Up Bentley Arnage 6.8L 1998-Up Rolls Royce Silver Serpah 5.4L 1994-2001 BMW 750iL 1994-1997 BMW 850Ci Codes: U23	Picture Not Available
	Used With These 1055-000-xxx Transmissions Incl. 017, 027, 028, 032, 039, 040	

ZF5HP-30

Ref: BM-64			
BMW32	1992-1/97 BMW 540i 1992-1/97 BMW 740i, 740iL 1993-1996 BMW 840i, 840Ci Codes: R13, T26		
	Used With These 1055-000-xxx Transmissions Incl. 010, 011, 026, 029, 030, 031		
	Type: Lock Up	Hub: Slotted	
	Diameter: 12"	Input Splines: 27	
	Bolt Circle: 10.375"	10mm x 1.25"	
	Mounting: 4 Holes	Pilot Dia: 1.257"	

Units on this page with part numbers that begin with "ZF5" are factory units remanufactured in Germany by ZF Industries.
The Recon Warranty does not apply to these factory units.



- ← **Transmission Serial #**
- ← **Used With Transmission #**
- ← **Vehicle Mfg. Transmission #. i.e. BMW, Audi, etc.**